



**Compass  
Software**

# **CAM/CNC SOLUTIONS FOR TIMBER CONSTRUCTION**



# BTL IMPORT FROM TIMBER CONSTRUCTION PROGRAMS

## Timber Construction

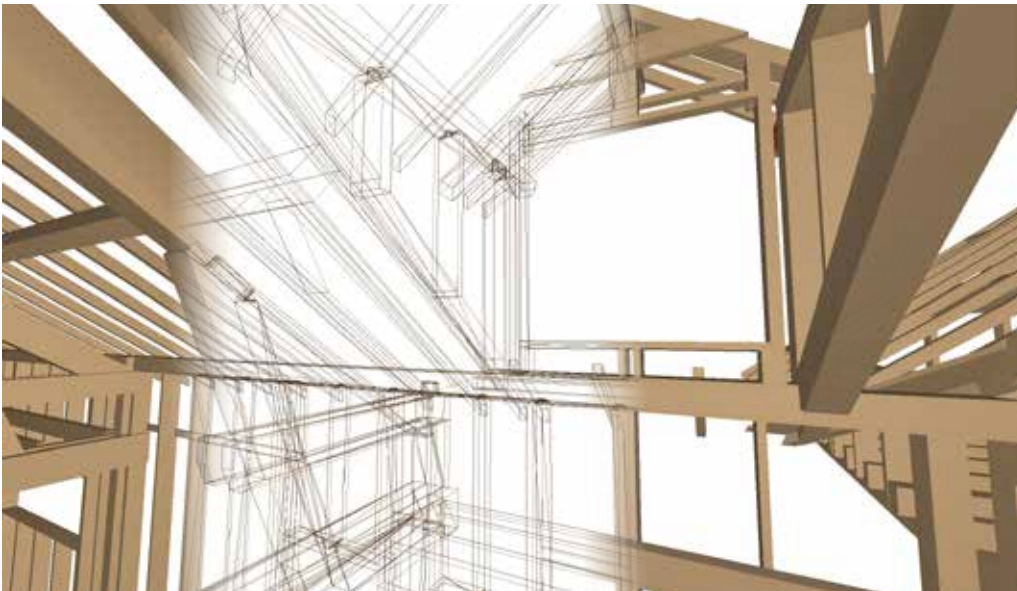
Next to our flexible and highly precise solutions for staircase manufacturing, we have also been offering CAM solutions for timber construction for quite some time now. These are based on the BTL interface which is serviced by all customary construction software.

The most exceptional thing is that the particular BTL format can be used via a single, unique, neutral processor for all processes and products in the timber construction industry. The control of all customary and eligible machining centres is conducted across platforms with only one single software. This software solution results in an innovative leap at our customers' woodshops, as well as making the execution of their work processes significantly faster and cheaper.

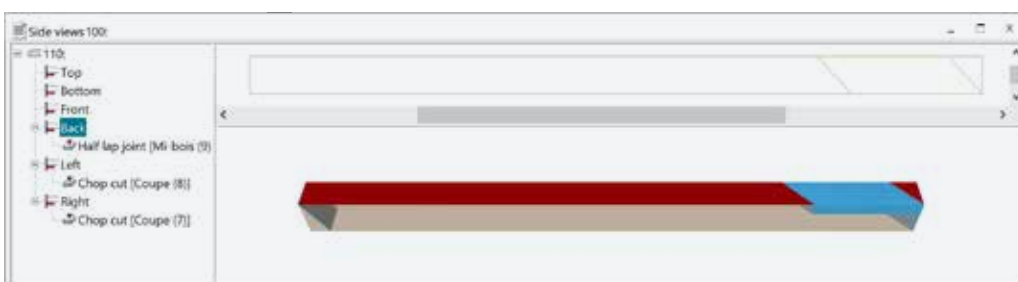
The CAM/CNC software for timber construction has been awarded by the Initiative Mittelstand (German non-profit organisation that supports SMEs) in the context of their INNOVATION AWARD IT 2016.

## Consulting

We will professionally analyse customer-specific business processes and will develop hands-on strategies for the rationalisation of procedures. The implementation of our recommendations optimises procedures and leads to a noticeable reduction in workload, saving of time, and a significant increase in efficiency for our customers.



The integrated BTL-Viewer makes it possible to visualise and control the entire project after the import into the system. It is possible to display both the 3D solid volume model, as well as the wire frame model which will visualise all processes.



Each individual part, including its processing steps, can be shown and edited.

# OUR CAM/CNC SOLUTION MACHINE INDEPENDENT

BTL data is imported from external CAD packages and the individual parts are prepared for the CNC in a self-determined order. Afterwards the system will automatically create the CNC programs and transfer them to the machine. The CNC code is influenced by the machine's settings. These include tool settings, approach and departure movements, speed, etc. The user is in full control and has the ability to influence the individual settings at any point in time.

## BTL-Import

- Import of orders from external CAD packages in BTL format
- Follow only a few steps to manufacture

## Parts Selection

- Preparation of parts for the CNC in self-determined order
- Fully automatic generation of CNC programs and transfer to the machine

## 3D View

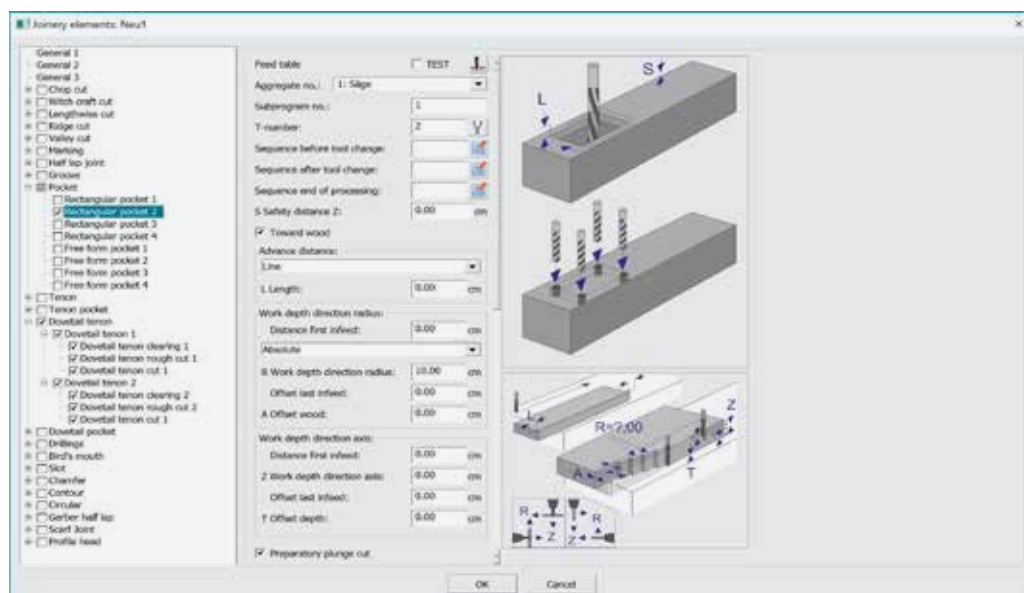
- Supervision of all processes through 3D display

## Individualisation

- Possibility to delete or to add already existing new processes
- Precise turning of parts into the correct processing position

## Processes

- Detailed graphic pictures help with the assignment of all process details

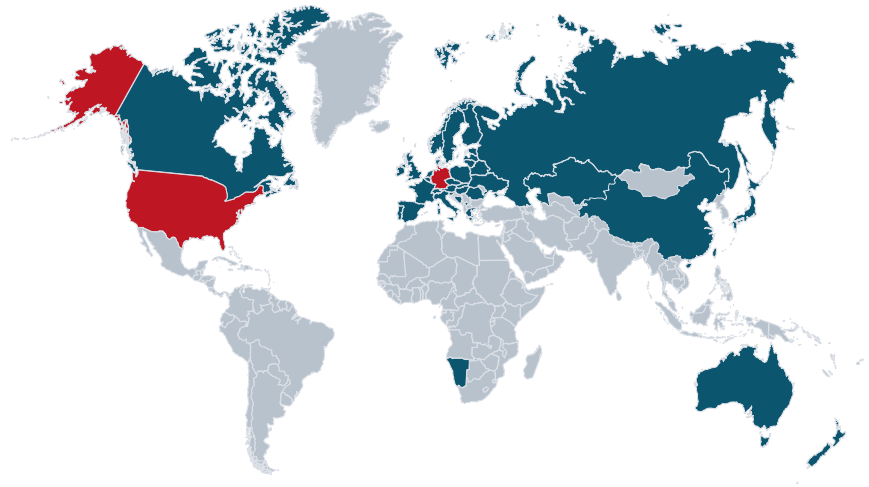


Each processing step in the BTL-CNC processor has extensive configuration options, which make it possible to activate, define, and influence the processes on the respective machines. Amongst others these are the selection of tools for processing, definition of approach and departure variations, the possibility to select whether to pre-puncture, etc.

With the support of the underlying detailed graphics, users are able to control the processes and optimise each individual operation. The control includes power over directions and speeds, and as well as ensuring the quality of the processes.

Example: a through feed machine which is used to manufacture regular joinery elements. Another possibility is the control of table machines (moving gantry or stationary gantry with moveable table). 5-axis processing is a given.

**Compass Software GmbH**  
**Steinhammerstr. 140a**  
**44379 Dortmund, Germany**  
**Phone +49 231 9812 90-0**  
**Fax +49 231 9812 90-10**  
**[www.compass-software.uk](http://www.compass-software.uk)**  
**[mail@compass-software.uk](mailto:mail@compass-software.uk)**



Compass Software ranks amongst the leading providers of software for staircase, timber, and window construction worldwide. We are experts in the field of CNC connections to all common machines. For more than 30 years, the company has been delivering innovative solutions to customers from more than 30 different countries. Our customers range from small businesses to large-scale industrial manufacturers. Nearly 3,000 customers have profited from our advanced expertise and extensive know how so far.

Our hands-on software makes our customers' processes more efficient and users can always rest assured that they are using the best technologies in their workshops.

Next to developing our standard modules, we are also specialists in developing unique additional solutions to satisfy user-specific hands-on needs.