

Codesnippets in Maschine

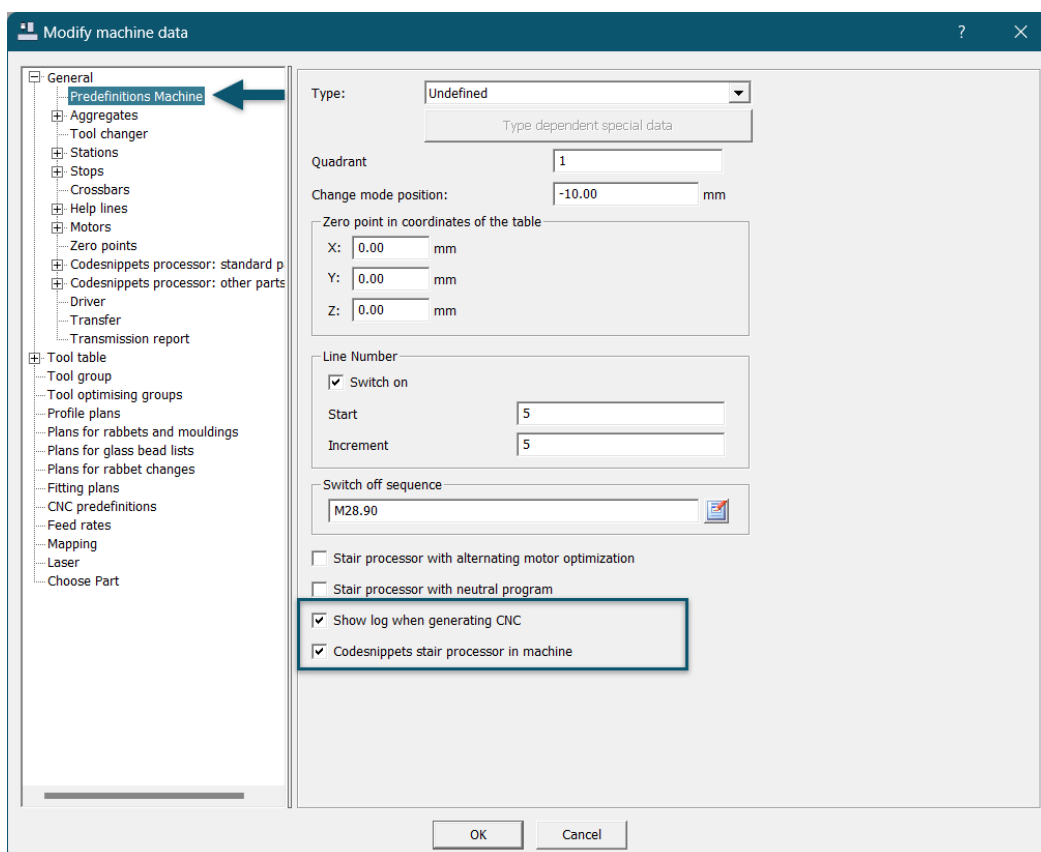
In your CNC machine in the **CNC program** tree in Compass, you can save all local files in the database so that CNC programs can be created on any workstation PC. This makes it possible to start creating programs immediately when moving computers.

Important: However, post-processing that is carried out with so-called batch files must still have the files intended for this in the local Compass Software installation path. These files can be saved with "save.bat" in the Compass Software installation path. A folder "C:\BACKUP_CS\BAT" is created. The files in this folder must then be backed up on the network/on a USB stick and copied over to the installation path on the new PC. By default, this is located in "C:\Program Files (x86)\Compass Software\Staircase Software Programs ND". Questions about "save.bat" are answered at the end of these instructions!

Note: If you deactivate the menu item from the first step, the local files are used again. This helps in the event that files have not been imported correctly.

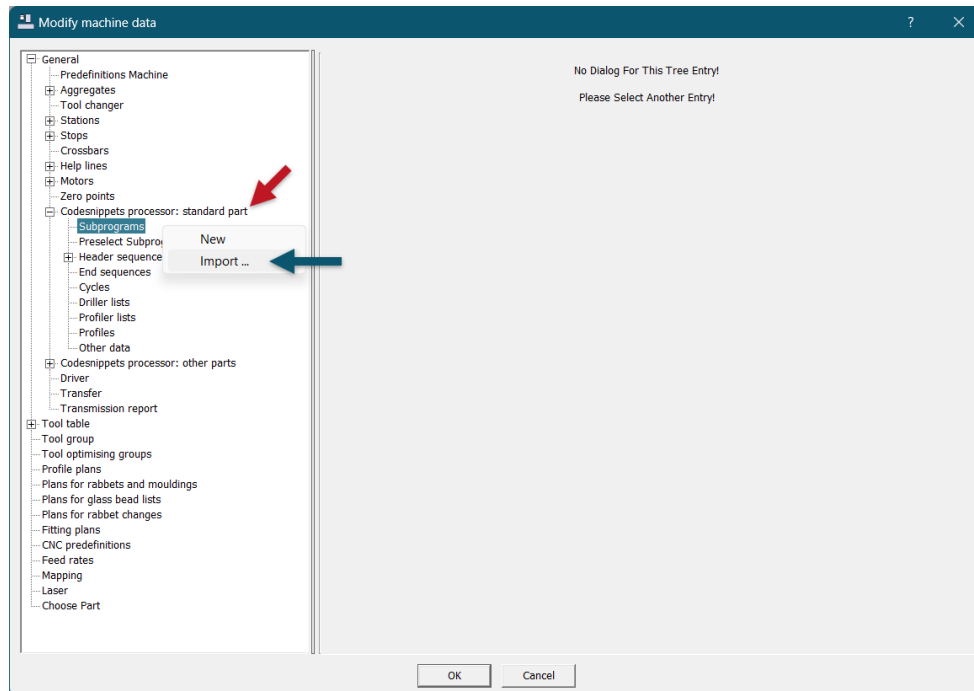
To activate the code sections for the staircase processor in the machine, the menu item provided for this purpose must be activated in the CNC machine in Compass under Machine settings → Code sections for staircase processor are in machine.

Bonus: Show log when generation CNC creates a log of all processing steps that exist for the CNC program creation. This helps to identify whether an operation may not be active if it is not carried out on the machine during milling.

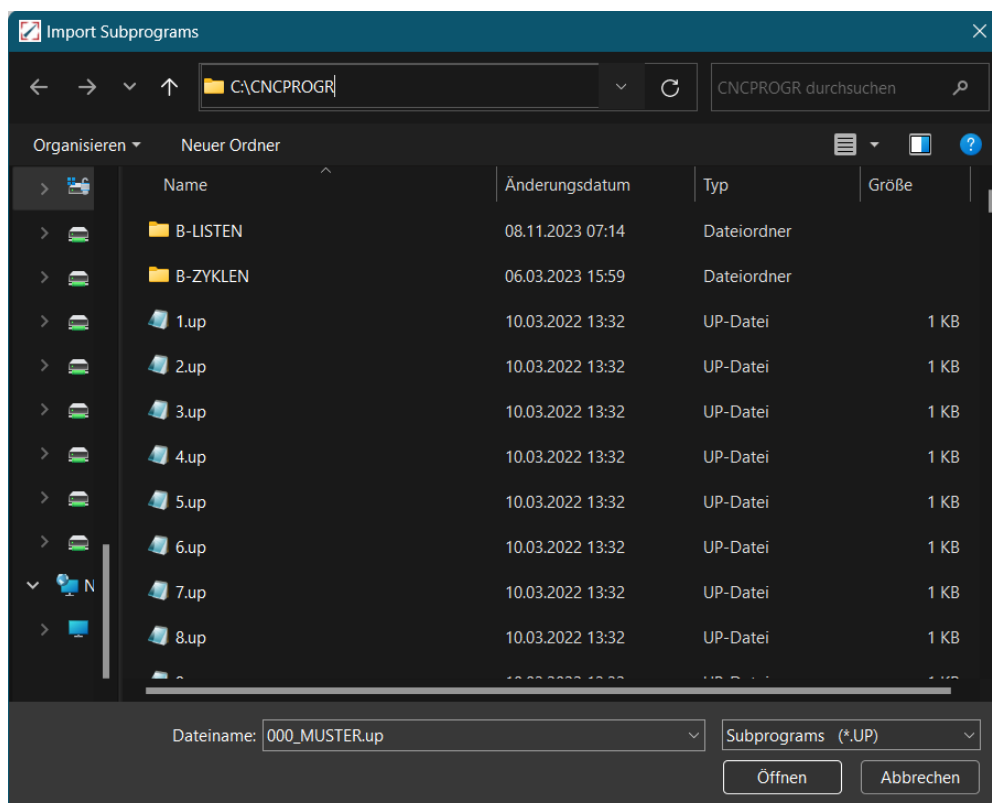


Codesnippets in Maschine

After selecting **Codesnippets stair processor in machine**, the files that are otherwise located locally must be imported into the system. To do this, please navigate to the menu item **Codesnippets processor: standard part**. Gradually, all menu items from Subprograms to Other data must be processed by **right-clicking -> Import**.



In the Windows Explorer file selection window that opens, you will immediately land in the correct path. Select **all .up files** from the subprograms and click **Open**.

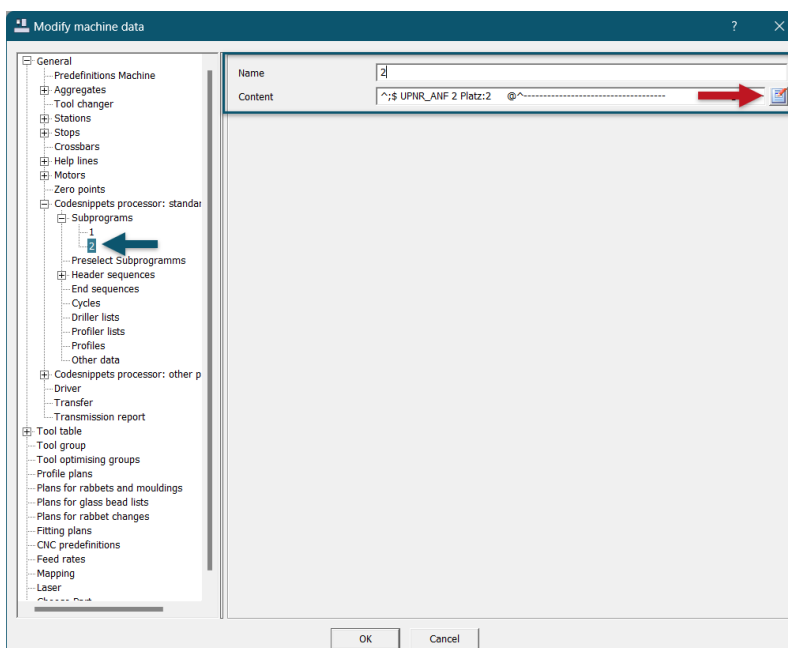
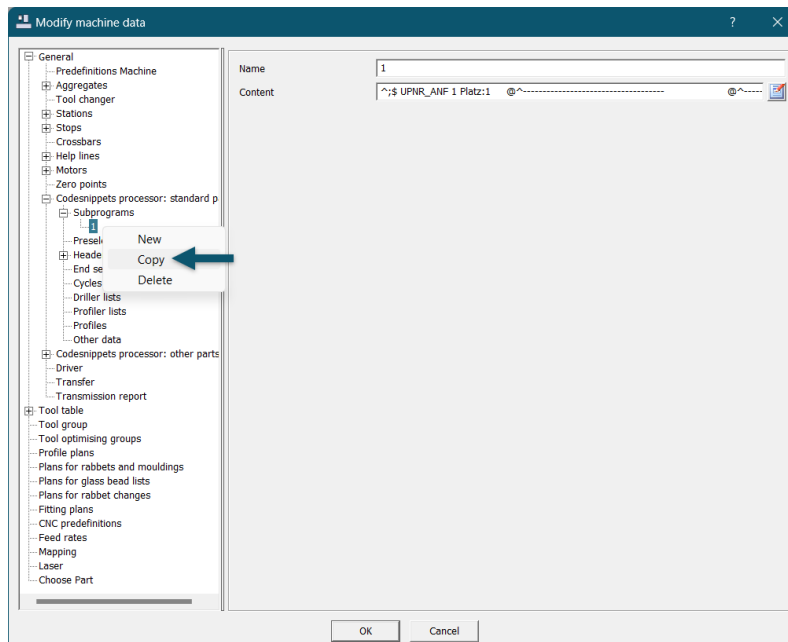


Codesnippets in Maschine

Please repeat the process for each menu item as already mentioned: **Preselect subprograms, Header sequences, End sequences, Cycles, Driller lists, Profile lists, Profiles, Other data**. If a folder in the Explorer is empty, there is no data to be imported! Once you have done this, please exit the machine dialog with **Ok** and create a few CNC programs to see if everything works.

Create a new tool aka subprogram

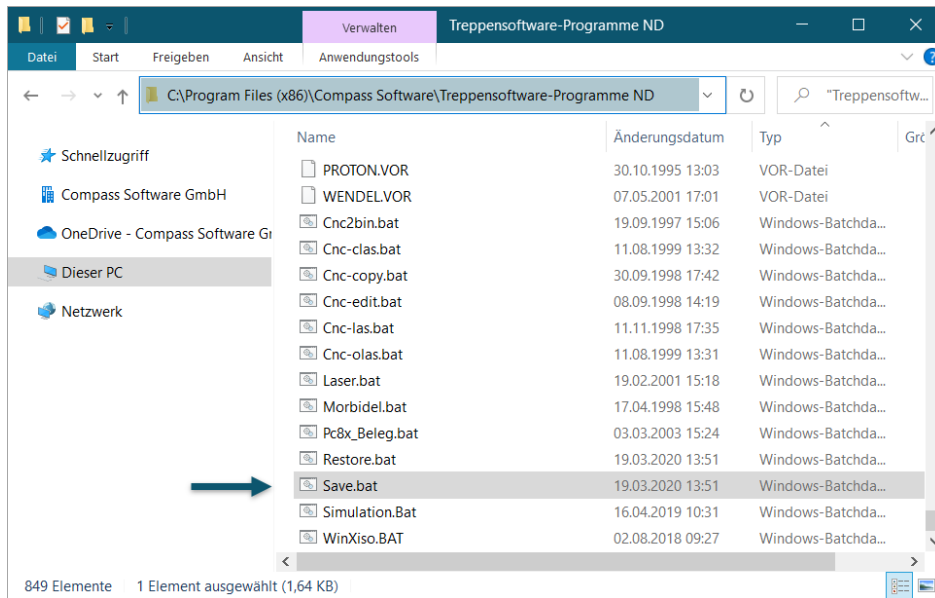
If, for example, you want to copy a subprogram (UP-file) because there is a new tool and you do not want to re-enter the text for the tool call, you can do this by **right-clicking** (-> Copy) on it. Then adjust using the edit icon the UP-file so that the identifier matches the tool number and the correct tool is entered in the UP. Header sequences (menu item for *header sequences*) can of course also be adapted in this way, e.g. to incorporate a shift in X, Y or Z.



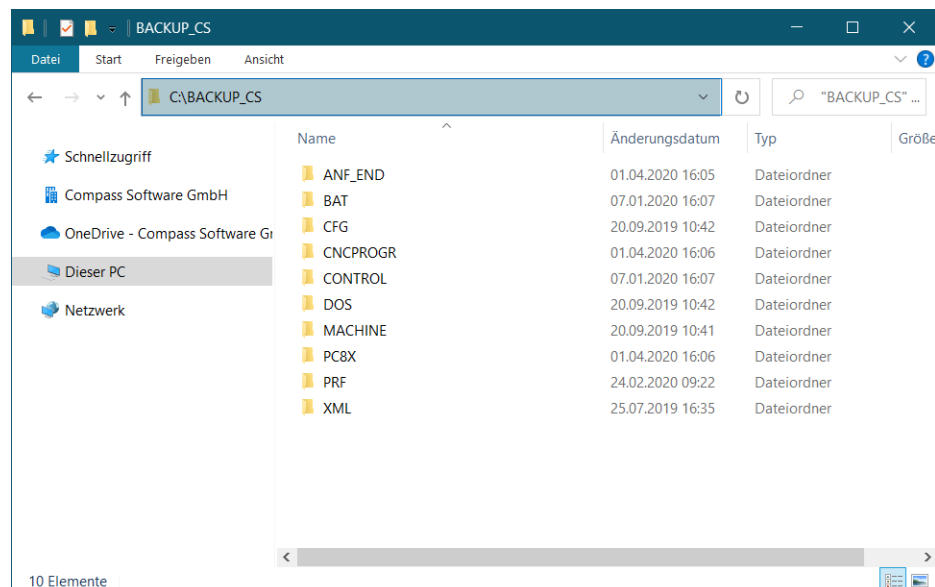
Codesnippets in Maschine

On the old PC from which the data is to be transferred:

1) On the old PC, where the creation of CNC programs is possible without 'errors': In the Compass installation path ("C:\Program Files (x86)\Compass Software\Staircase Software Programs ND") there is a file called "save.bat". Please execute this file once. The file saves all necessary local file!



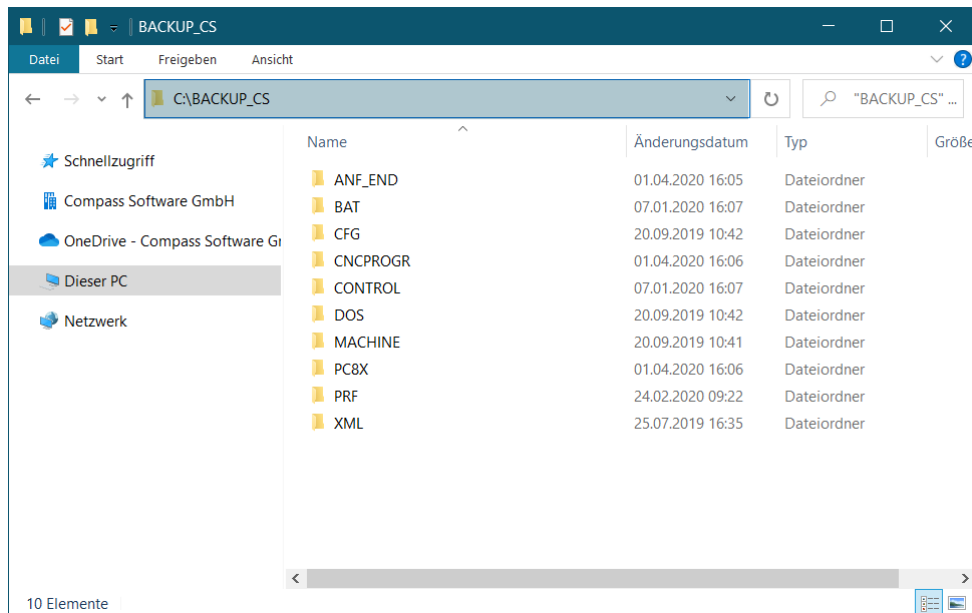
2) Copy the folder "C:\BACKUP_CS" to a USB drive or to a network folder to which the new PC has access.



Codesnippets in Maschine

On the new PC:

3) Insert the USB drive (or open the network folder where you backed up the machine data) and move the BACKUP_CS folder to the folder where Compass Software is installed, in most cases C:\.



4) In the Compass Software installation path ("C:\Program Files (x86)\Compass Software\Staircase Software Programs ND") there is a file called "restore.bat". Please execute this file to restore all data which is relevant for the generation of the CNC-programs that were saved in step 1.

