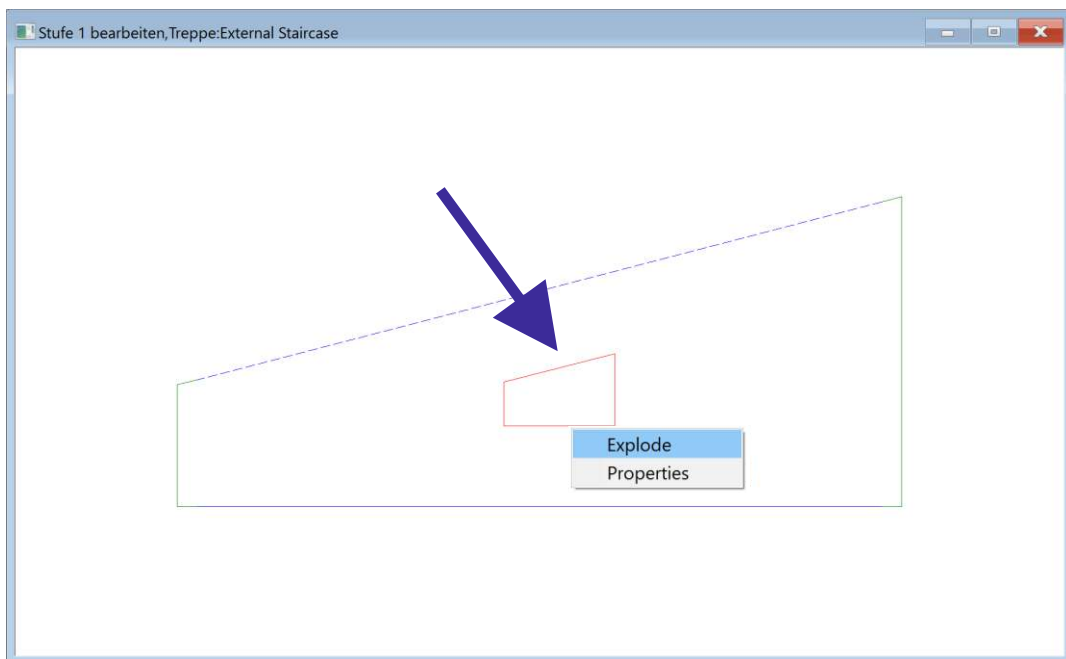


**Compass
Software**

External Staircase Plus Extension Free Form Pockets

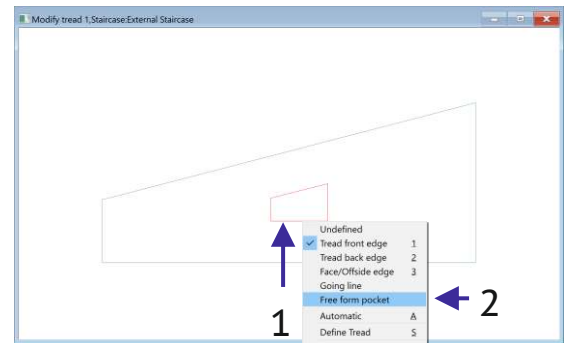




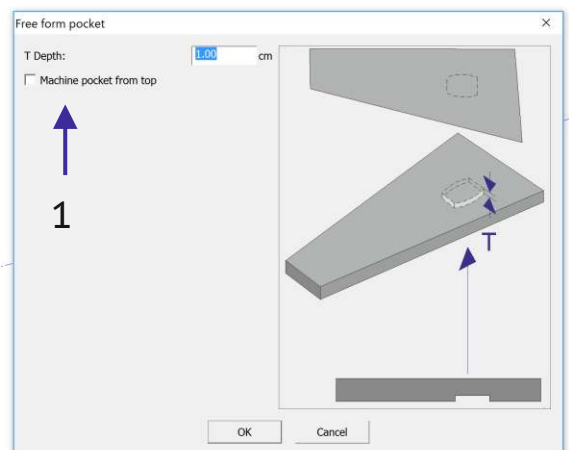
6.4 New (from Version 10.8.8.0) Free Form Pockets

This extension serves to import existing free form pockets in treads. Furthermore, it is possible to add your own pockets via the free form construction.

The pockets is defined first, after import of DXF tread data with the free form pockets. In order to do this click right on the line of the pocket polygon (1) and select free form pocket (2).



The menu that follows gives the opportunity to decide whether the pockets are to processed from above or below (1). Then, put in the depth of the pocket. Save your input by clicking OK. (Display with dotted line = pocket from below).



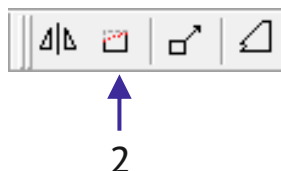
Continue as described in chapter 3.2 “define tread edge” And 3.3 “transfer tread”.

Changes can be made later via “Modify” (as described in chapter 6.3 last image).

Construct free form pocket.

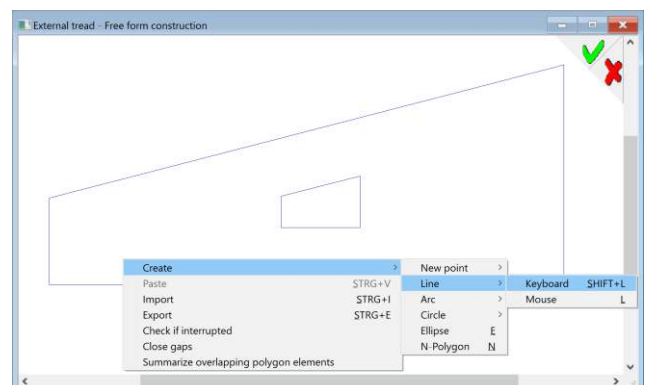
Defining your own pocket when importing is possible via the many tools available in the free form construction.

To do this (after reading in the tread data) call up the free form construction for “external tread” in the task bar.



The desired polygon can be constructed using lines and arches.

After saving repeat the steps outlined above (starting from the first picture in this chapter).

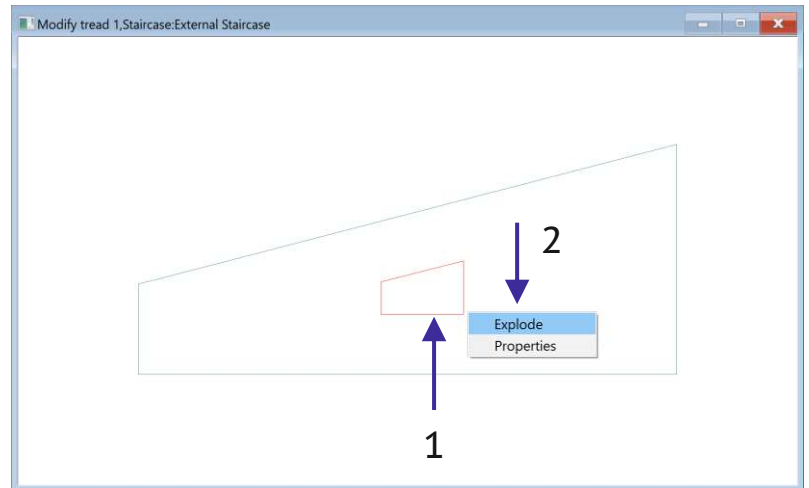




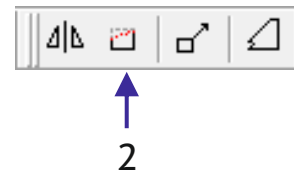
Changing already existing free form pockets

Changing already assigned free form
pockets later is also possible. To do this,
the existing pocket has to be exploded.

To do this click on the first line of the
pocket polygon (1) and choose
explode (2).



The existing pocket polygon will be taken over when calling up
the free form construction (2) and can be altered.



After saving the free form construction the steps can be repeated as outlined from the
beginning of this chapter.

Tread edges have to be assigned again. Only after assigning the treads it will be possible to
define and save the tread data.